

For real

For fun

Evidence of feasting



# Creating a Butterfly Garden



# Selecting Your Garden Area



- **Size:**  
Can be any size  
you can  
accommodate



- **Sunlight:**  
Direct sunlight  
is a necessity



- **Shelter:**  
Some shelter  
from wind is  
needed

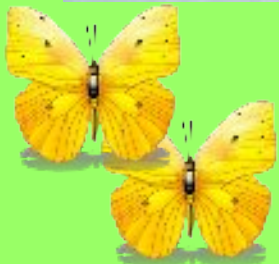




# Analyzing Your Site



- Take measurements of the area
- Include all buildings and established trees
- Note permanent fixtures, things like concrete foundation extensions from sheds, garages, or fence posts, or crawl space access areas
- Call Miss Dig: 811
- Analyze the number of hours of direct light at different times of day, at different times of year, but concentrate on April through September

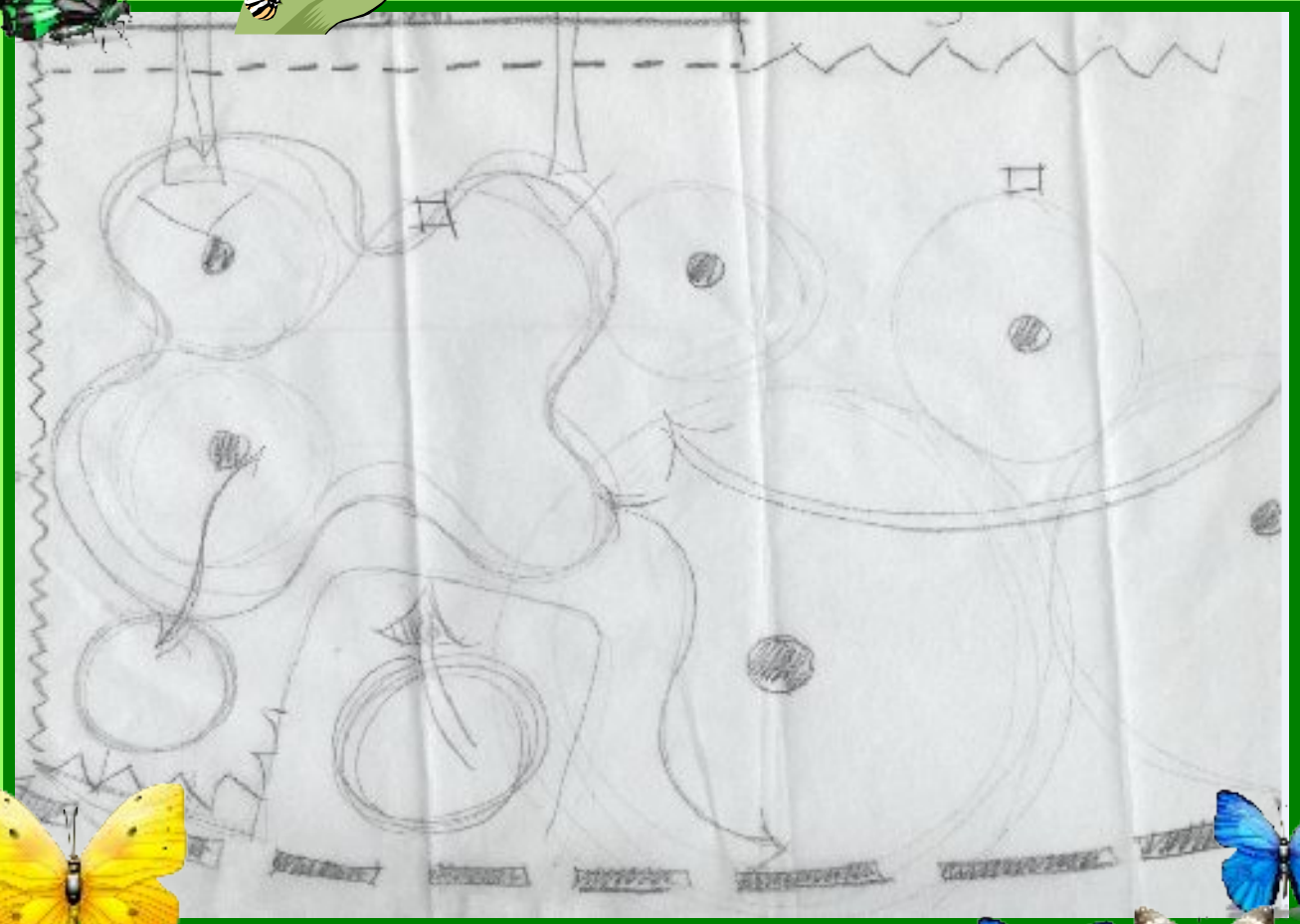




# Preliminary Layout

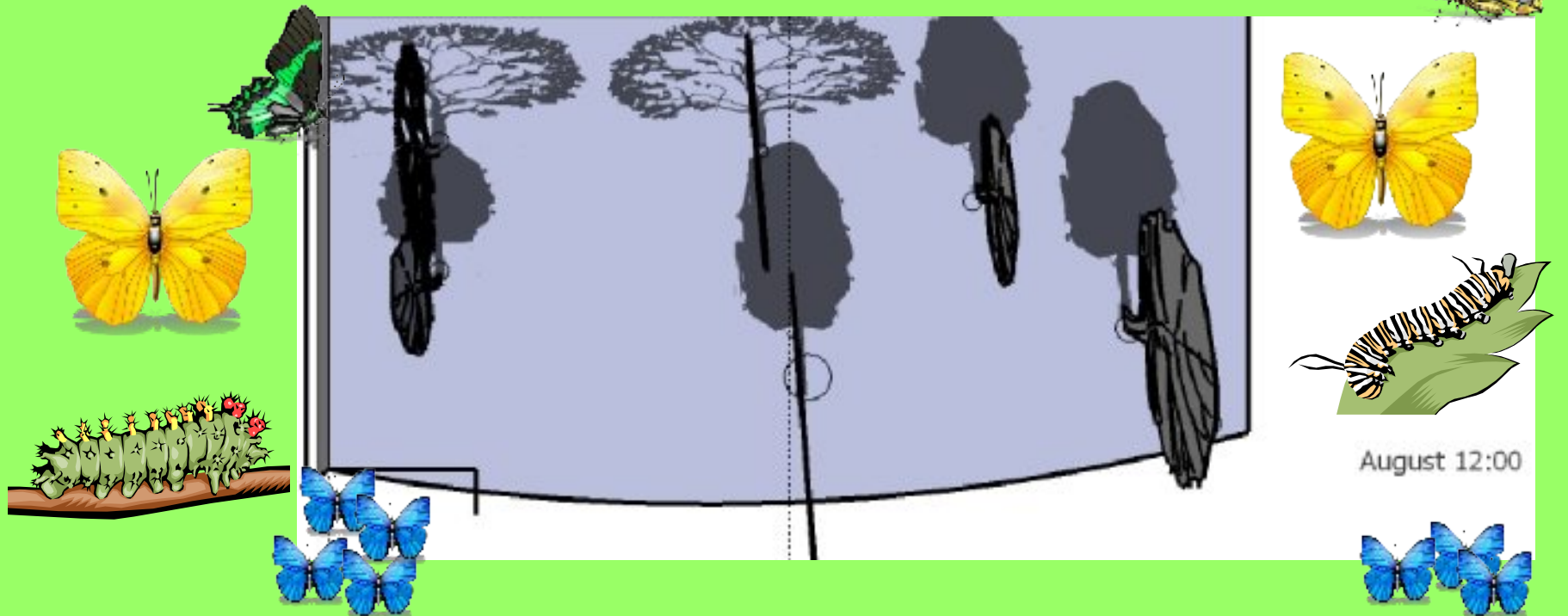


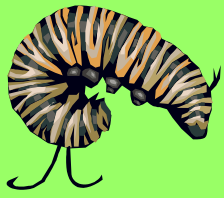
- Sketch out the basic fixtures of the site
- Use this as a base for charting sun
- Use this as a base for the design concept
- Sketch ideas that include the basic fixtures, the sun patterns, and your planning ideas



# Chart the Sun and Shadows

- Use your basic site assessment to chart the sun and shadows at various times of the day
- The canopies of the trees will cast shadows based on the time of year and time of day
- The sun will be higher in the sky closer to mid-summer





# Planning



## ➤ Creating a design

Lay out the garden area, define the planting beds and paths for close-up views, choose focal points of interest

## ➤ Plant selection

What plants attract which butterflies?

What host plants attract which larvae and what nectar plants attract which butterflies for feeding?



## ➤ How much time can you spend on maintenance?

Weeding, watering, dead-heading, available "puddling" and basking:

Butterflies like to take a drink from tiny puddles and sun themselves on warm protected places

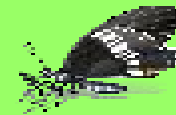


## ➤ Budget

How much do you want to spend on everything for the garden?

Do you want to have a budget each year and develop your garden in phases?





# Hierarchy of Design

- Consider pathway materials and locations to make your garden more accessible
- Add focal points; arches or trellises, benches, garden art, and rocks - which can also be used for basking
- Include shallow water features for "puddling" - pretty saucers set on tiles, shallow ceramic plates nestled in the mulch
- Choose specific plants or shrubs as focal points - many native specimen plants attract butterflies
- Consider how you will irrigate your garden once it is installed





# Design Structure



- Consider pathway materials and locations to make your butterfly garden more accessible
- Add focal points like arches, benches, garden art, butterfly houses - and rocks, which butterflies like for basking
- Choose specific plants or shrubs as focal points - select specimen plants that attract butterflies
- Include shallow water features for "puddling" - pretty saucers set on tiles, shallow plates nestled in the mulch, or settled on pedestals - remember to think about irrigation



# ROPL Concept Design



- A high-level concept design is a good starting place
- Layout the basic spaces for beds and paths
- Get a sense of proportion

- Play with ideas
- Decide how to use the space

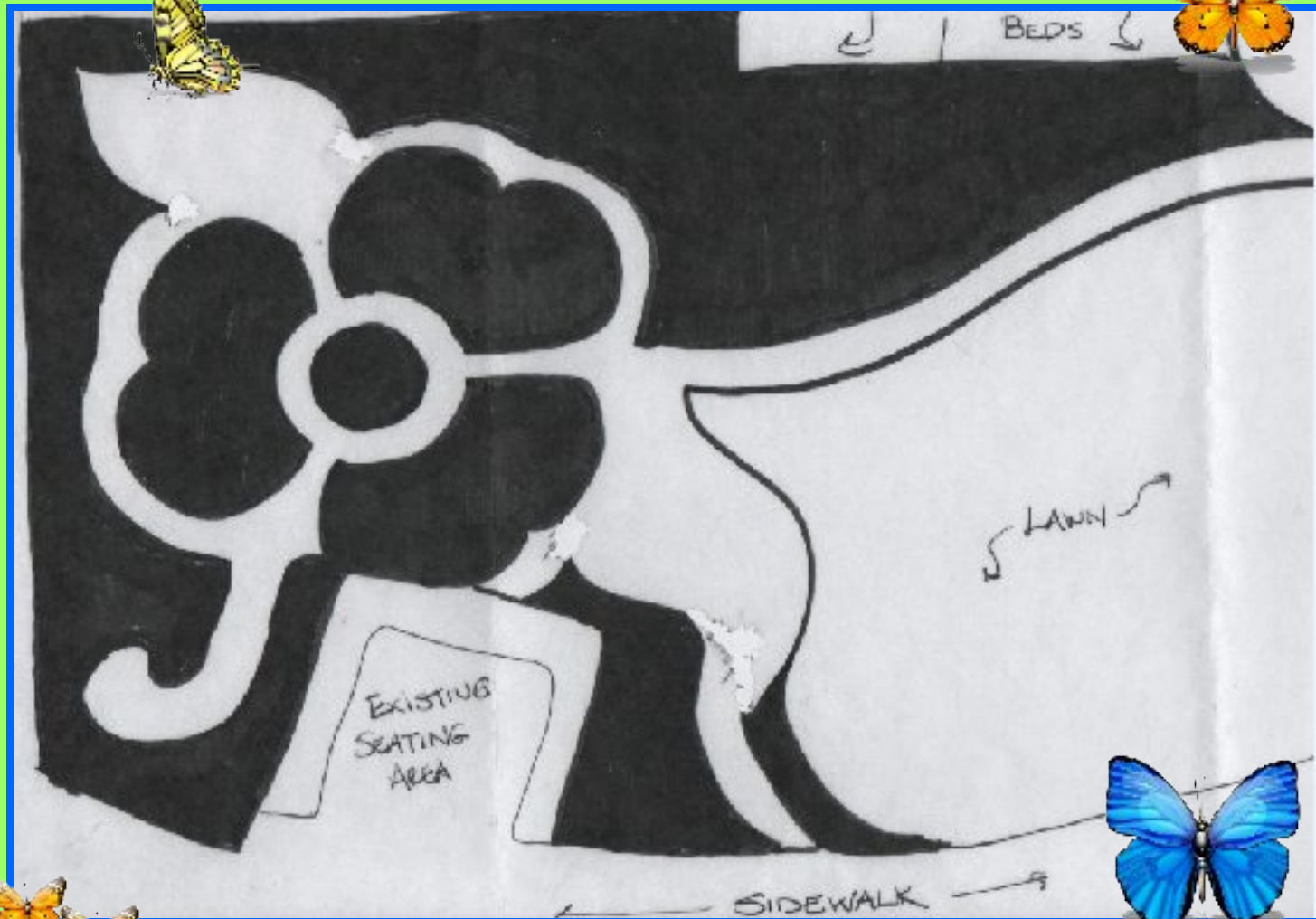




# ROPL Design Focus: Planting Areas



- Simplify the design to show only planting areas, paths, and fixtures
- Use this snapshot to determine the measured area of your planting beds



# Researching Your Plants



What butterflies do you want to attract?  
What host plants attract their larvae and what nectar plants attract these butterflies for feeding?



The Royal Oak Public Library has a wonderful staff and catalog of resources to help you make your selections.

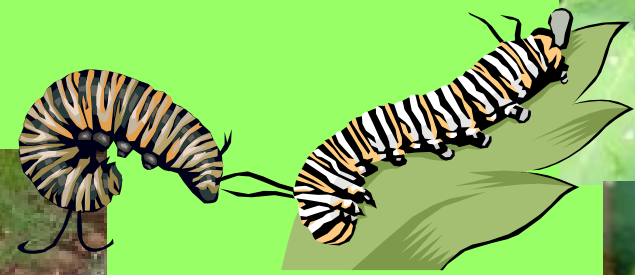
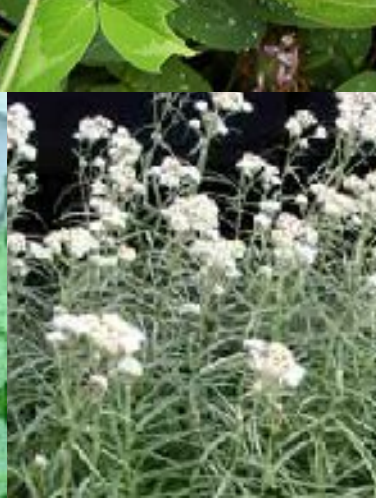




***Butterfly Friendly  
Plants***



# Host Plants





# Nectar Plants





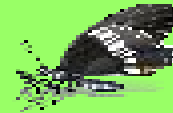
# Adapting Your Site to Your Plan



You've selected your garden site and chosen your garden plan, now bring them together



- Don't guess - soil test!
- Irrigation - built in or add on?
- Cutting the beds - while you wait for the soil test results
- Cutting the paths - they need to be deeper than the beds and you may need edging
- Amend soil to plant's needs - don't waste money or effort!
- Decide on materials for pathways and planting bed mulch



- Decide where focal points should be installed: benches, trellises, garden art, basking and "puddling" points



# Implementation

- Order or pick up path materials  
Install path edging if needed  
Install pathways
- Order or pick up compost and mulch  
Amend soil with compost and mulch beds to three inches deep
- Shop for plants  
Watch for sales and plant swaps to get the best prices -  
remember to plant according to the plant's seasonal requirements

# Maintenance

- Ongoing watering, dead heading, feeding, and weeding
- NO!! Pesticides
- NO!! herbicides
- NO!! Irritants like BBQ smoke or pet activity in the garden area
- Putting the garden to bed in the fall
- Waking the garden up in spring

# Your Library-Your Garden!

- Get involved in creating the garden - volunteer!
- We need help at every stage - prep, planting, maintenance ...
- Learn more about gardening and butterflies
- It's good exercise 😊
- Make new friends
- Learn more about the Master Gardener program
- Bragging rights!



# Green Thumb Series by the Royal Oak Public Library Butterfly Garden Designed and Constructed by Oakland County Master Gardeners



Michigan State University All Rights Reserved

Master Gardener Society  
of Oakland County  
1200 N. Telegraph Road  
Farmington, MI 48341  
P 248-358-0900  
[nfd@mgsooc.org](mailto:nfd@mgsooc.org)



### Bringing Knowledge to Life

Michigan State University Extension materials and programs are open to all without regard to race, color, national origin, gender, religion, age, disability, political beliefs, sexual orientation, marital status or family status. MSU is an affirmative-action equal opportunity institution.

For more information about the MSUE Master Gardener program, or for questions about plants and gardening in general,



call 1-888-MSUE-4MI



# Credits

The following people were invaluable in bringing you this program.

- Royal Oak Public Library: Metta, Mary Ann
- Master Gardeners: Emily, Lucas (future MG), Sid, MJ  
Beth, Sandra
- DPS: Greg
- Lou: Tech Support

